

REFRIGERATOR MANUFACTURER
Turbo air

**Commercial
Refrigerator
Service Manual**

Pizza Prep Table

Model No.: TPR-67SD

TABLE OF CONTENTS

1. FEATURE CHART

- 1-1. FRONT VIEW
- 1-2. PLAN VIEW AND SIDE VIEW

2. WIRING DIAGRAM

- 2-1. TPR-67SD

3. PART DETAILS

- 3-1. DUCT PANEL (EXTERIOR)
- 3-2. EVAPORATOR FAN MOTOR GUARD
- 3-3. EVAPORATOR FAN MOTOR ASSEMBLY
- 3-4. EVAPORATOR COIL
- 3-5. AIR GUIDE PANEL & PAD
- 3-6. DUCT PANEL (INTERIOR)
- 3-7. CABINET FRONT COVER
- 3-8. THERMOSTAT & POWER SWITCH
- 3-9. CONDENSER COIL
- 3-10. CONDENSER FAN MOTOR ASSEMBLY
- 3-11. COMPRESSOR COMPARTMENT PART (FRONT)
- 3-12. COMPRESSOR COMPARTMENT PART (BACK)

4. MAIN COMPONENTS

- 4-1. COMPRESSOR
- 4-2. COMPRESSOR RELAY, OVERLOAD
- 4-3. COMPRESSOR CAPACITOR
- 4-4. CONDENSER FAN MOTOR
- 4-5. EVAPORATOR FAN MOTOR
- 4-6. SWITCH

5. ELECTRONIC CONTROLLER INSTRUCTION

- 5-1. HOW TO USE THE TEMPERATURE CONTROL
- 5-2. FUNCTION TABLE

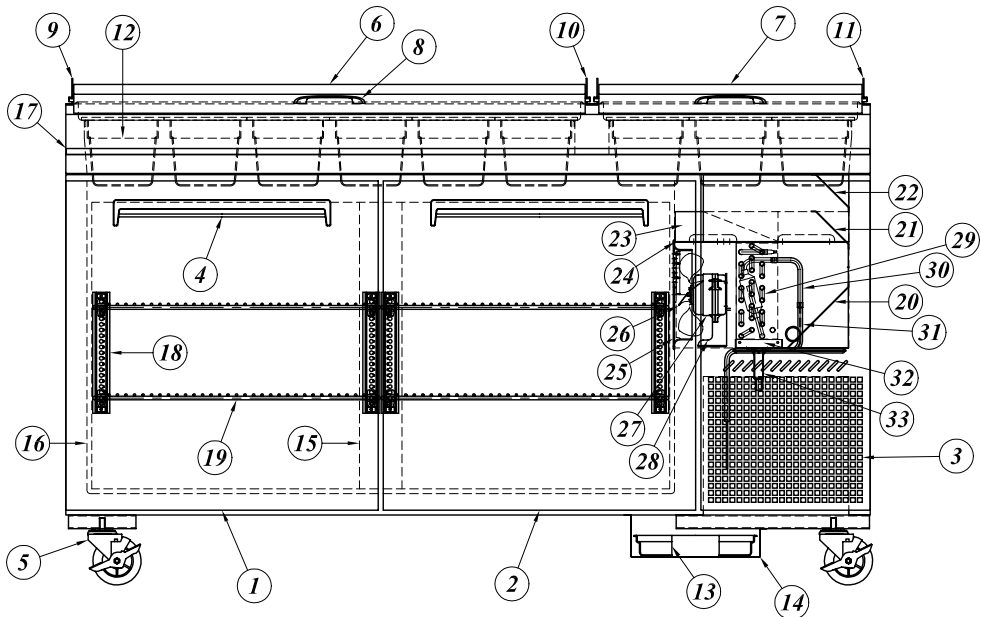
6. SPARE PARTS LIST

7. REPLACEMENT OF MAIN COMPONENTS

- 7-1. REPLACING THE DOOR
- 7-2. REPLACING THE MULLION
- 7-3. REPLACING THE CABINET FRAME HEATER
- 7-4. REPLACING THE EVAPORATOR FAN MOTOR
- 7-5. EVAPORATOR LEAK CHECKING
- 7-6. REPLACING THE COMPRESSOR COMPARTMENT PART
- 7-7. REPLACING THE EVAPORATOR

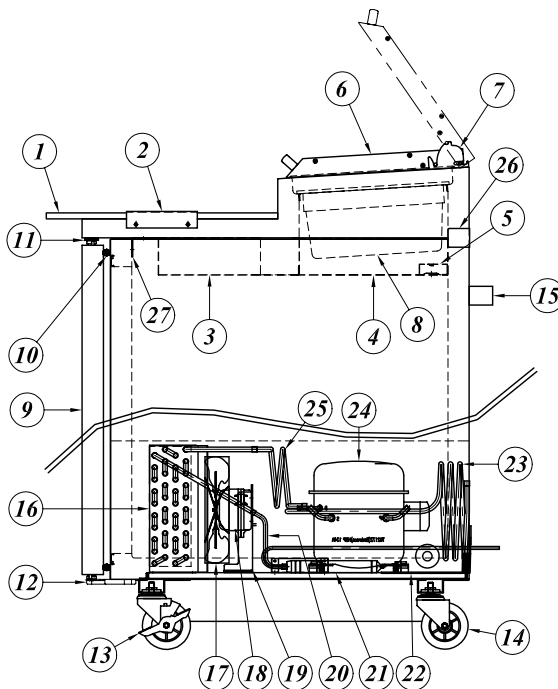
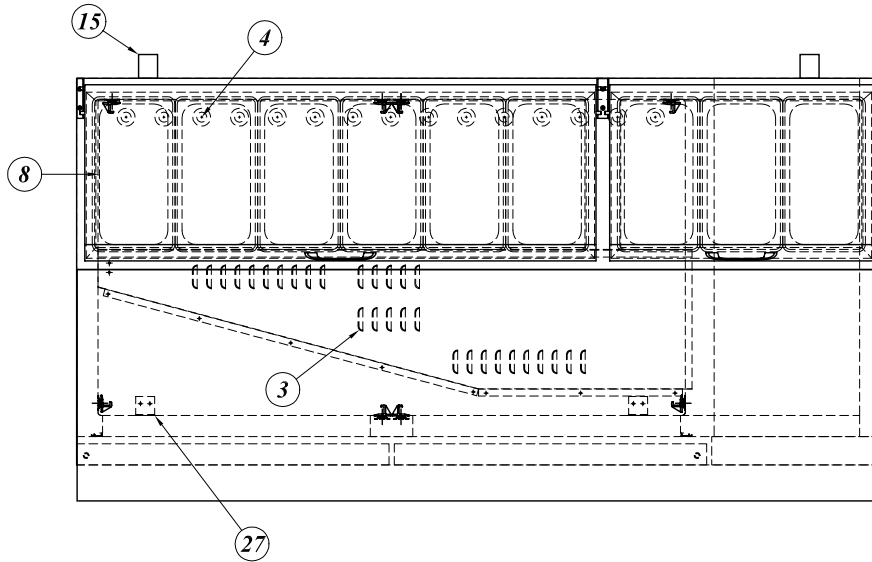
1. FEATURE CHART

1-1. FRONT VIEW



- | | |
|---------------------------------|---------------------------------------|
| 1 DOOR LEFT | 18 SHELF STANDARD |
| 2 DOOR RIGHT | 19 SHELF |
| 3 FRONT GRILLE PANEL | 20 AIR GUIDE PANEL (A) |
| 4 DOOR HANDLE | 21 AIR GUIDE PANEL (B) |
| 5 CASTER BRAKE 'FRONT' | 22 AIR GUIDE PANEL (C) |
| 6 HOOD LID LEFT | 23 AIR GUIDE PAD |
| 7 HOOD LID RIGHT | 24 DUCT PANEL |
| 8 HOOD LID HANDLE | 25 EVAPORATOR FAN MOTOR GUARD |
| 9 HOOD LID BRACKET LEFT | 26 EVAPORATOR FAN BLADE |
| 10 HOOD LID BRACKET CENTER | 27 EVAPORATOR FAN MOTOR |
| 11 HOOD LID BRACKET RIGHT | 28 EVAPORATOR FAN MOTOR BRACKET |
| 12 PAN | 29 EVAPORATOR COIL |
| 13 DRAIN PAN | 30 CONNECTING PIPE |
| 14 DRAIN PAN HOUSING | 31 SUCTION LINE(A) AND CAPILLARY TUBE |
| 15 MULLION AND MULLION HEATER | 32 EVAPORATOR DRAIN PAN |
| 16 FRAME COVER AND FRAME HEATER | 33 DRAIN HOSE CONNECTOR |
| 17 CUTTING BOARD | |

1-2. PLAN VIEW AND SIDE VIEW

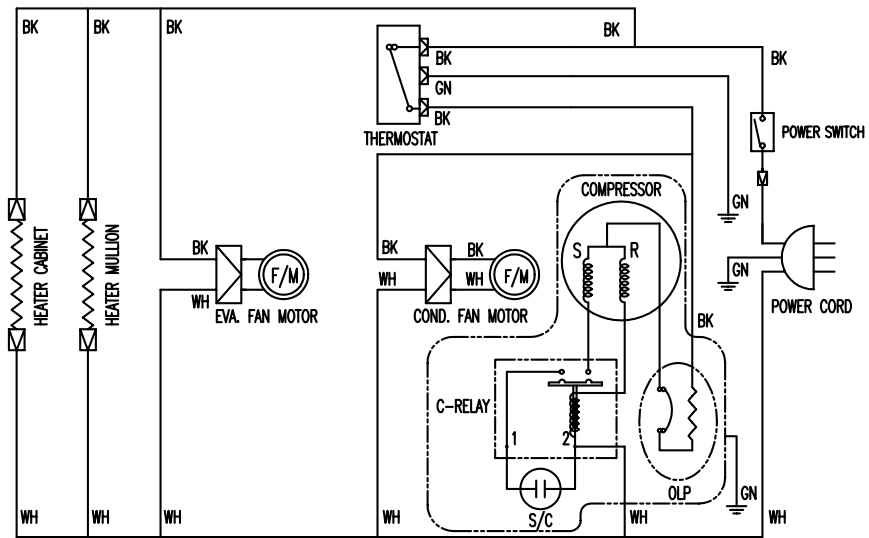


- 1 CUTTING BOARD
- 2 CUTTING BOARD BRACKET
- 3 AIR DUCT PANEL (LOUVERED PANEL)
- 4 PAN DUCT
- 5 PAN DUCT COVER
- 6 HOOD LID
- 7 HOOD LID BRACKET
- 8 PAN
- 9 DOOR
- 10 DOOR GASKET
- 11 DOOR HINGE TOP
- 12 DOOR HINGE BOTTOM
- 13 CASTER BRAKE
- 14 CASTER
- 15 CUSHION SPACER
- 16 CONDENSER COIL
- 17 CONDENSER FAN BLADE
- 18 CONDENSER FAN MOTOR
- 19 CONDENSER FAN MOTOR BRACKET
- 20 CONNECTING PIPE
- 21 DRYER
- 22 CAPILLARY TUBE
- 23 SUCTION LINE(B)
- 24 COMPRESSOR
- 25 CONNECTING PIPE (DELIVERY PIPE)
- 26 CABINET BRACKET
- 27 LINER BRACKET

2. WIRING DIAGRAM

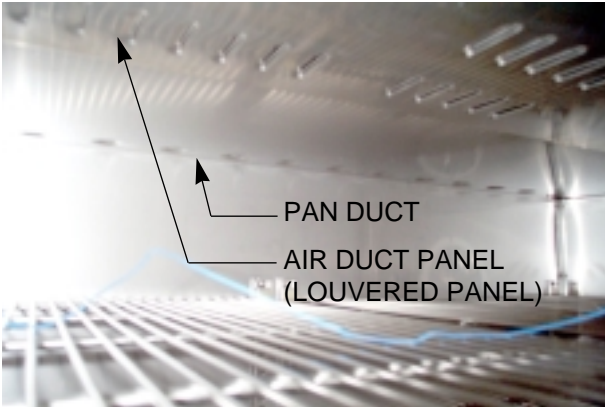
TPR-67SD

WIRING DIAGRAM

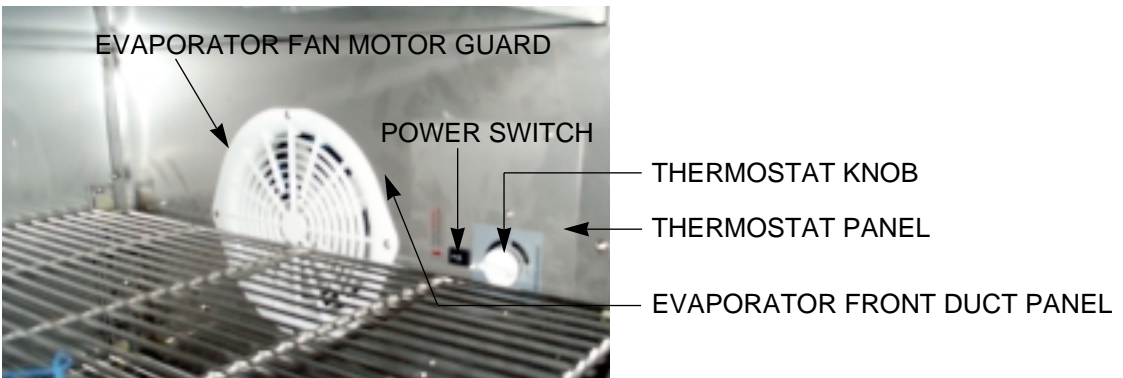


3. PART DETAILS

3-1. AIR DUCT PANEL (EXTERIOR)

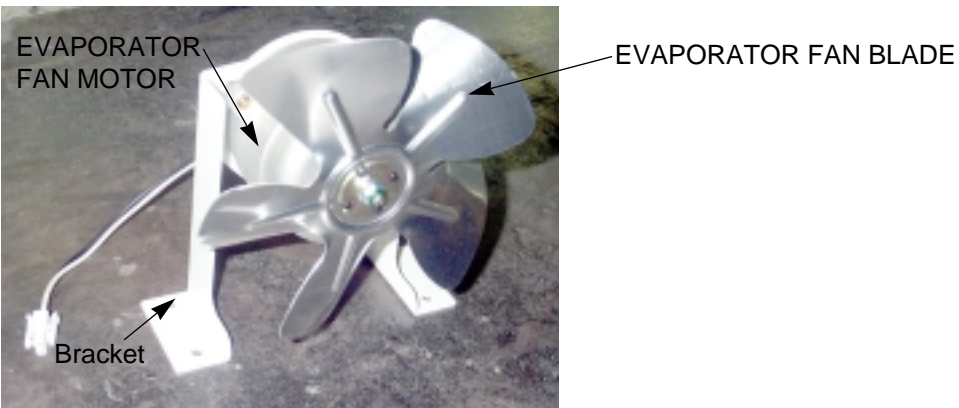


3-2. EVAPORATOR FAN MOTOR GUARD

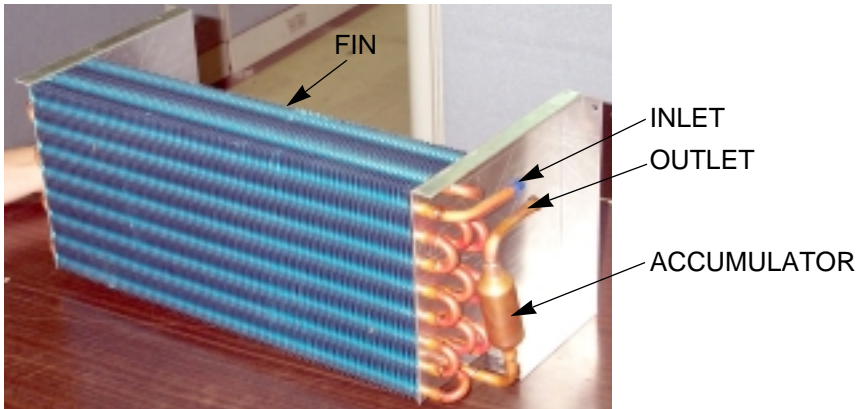


The position of the POWER SWITCH and the THERMOSTAT KNOB can be changed for improvement without notice.

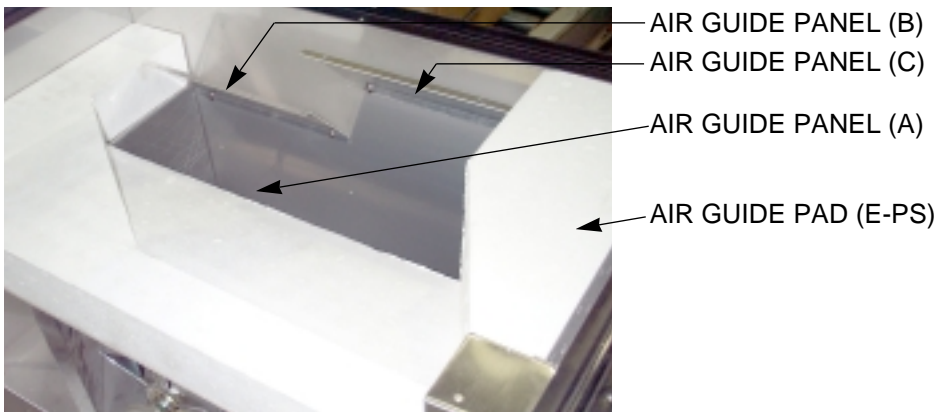
3-3. EVAPORATOR FAN MOTOR



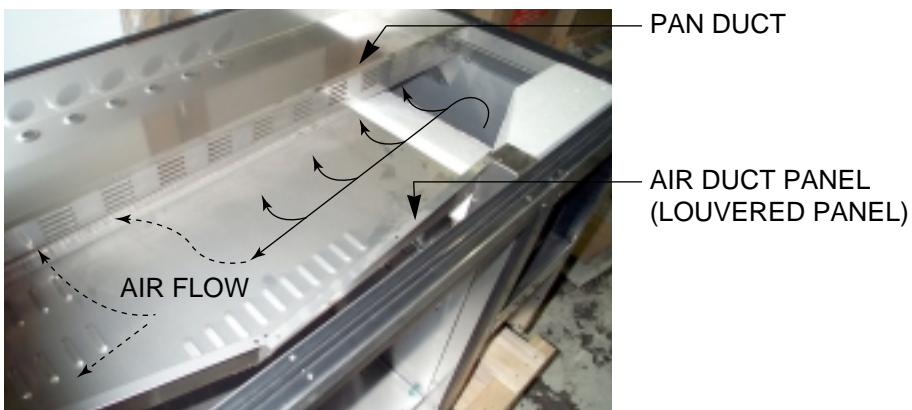
3-4. EVAPORATOR COIL



3-5. AIR GUIDE PANEL & PAD

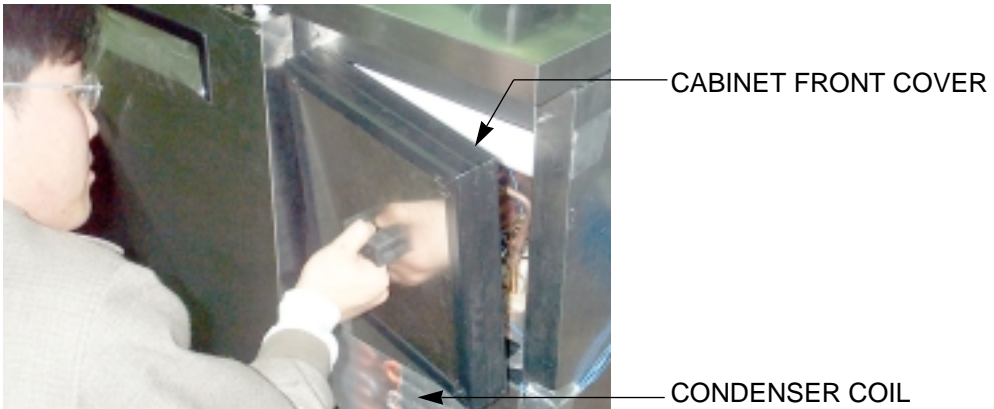


3-6. DUCT PANEL (INTERIOR)

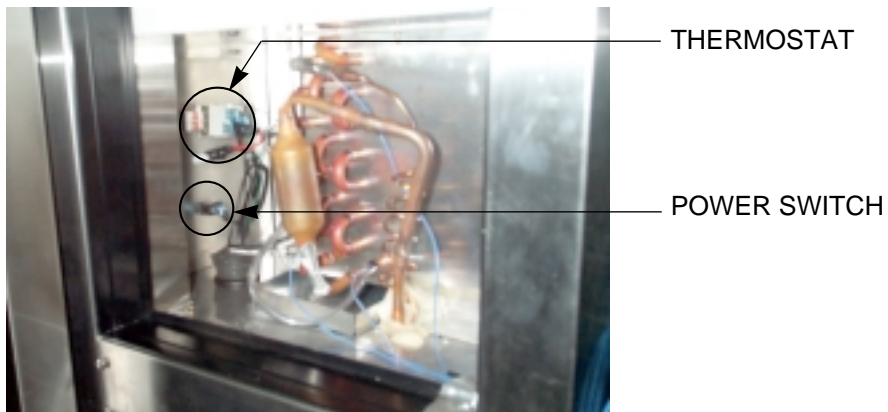


PART DETAILS

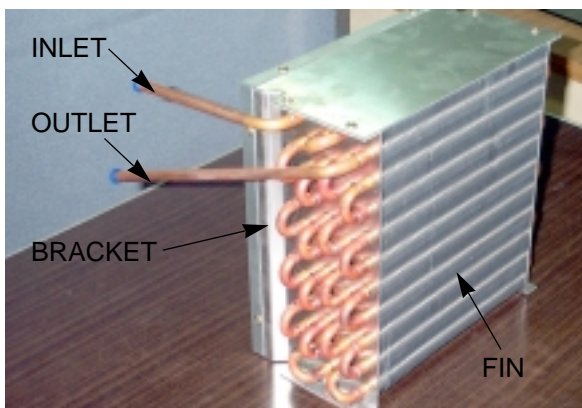
3-7. CABINET FRONT COVER



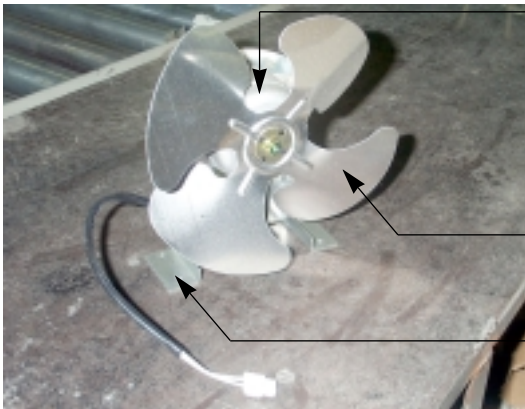
3-8. THERMOSTAT & POWER SWITCH



3-9. CONDENSER COIL



3-10. CONDENSER FAN MOTOR

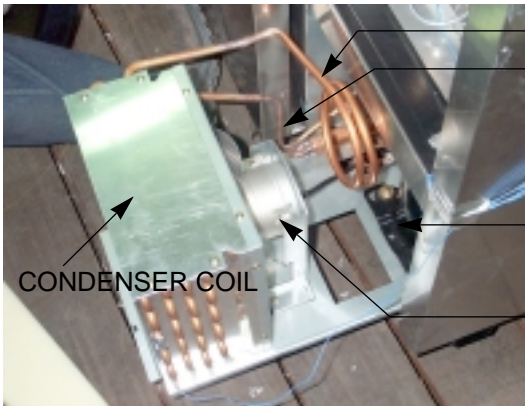


CONDENSER FAN MOTOR

CONDENSER FAN BLADE

BRACKET

3-11. COMPRESSOR COMPARTMENT PART (FRONT)



CONNECTING PIPE (A)

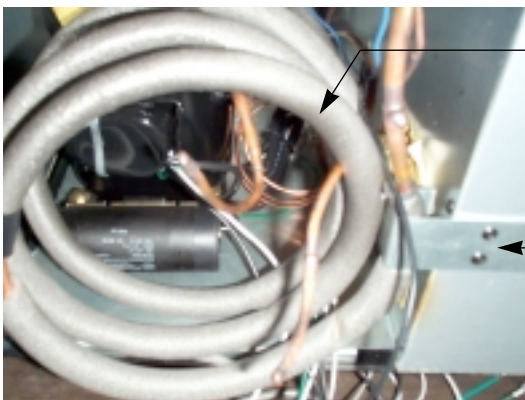
CONNECTING PIPE (B)

COMPRESSOR

CONDENSER FAN MOTOR

CONDENSER COIL

3-12. COMPRESSOR COMPARTMENT PART (BACK)



SUCTION LINE (B)

SUCTION LINE FIXTURE

4. MAIN COMPONENTS

4-1. COMPRESSOR

MODEL	PART NAME	PART NO.	HORSE POWER	CAPACITY	TYPE OF MOTOR	INPUT	MAKER
TPR-67SD	T6217Z	3020014570	5/8HP	7,638.4BTU/h (1,925Kcal/h)	CSIR	-	EMBRACO

4-2. COMPRESSOR RELAY, OVERLOAD

MODEL	RELAY	PART NO.	OVERLOAD	PART NO.	MAKER	NOTE
TPR-67SD	9660-A-041-191		MRT00AFW-3187	-	EMBRACO	

4-3. COMPRESSOR CAPACITOR

MODEL	STARTING	PART NO.	RUNNING	PART NO.	MAKER	NOTE
TPR-67SD	330V 189~227 μ F	Comp. Assembly		-	-	-

4-4. CONDENSER FAN MOTOR

MODEL	PART NAME	PART NO.	POLE	INPUT	TYPE	BLADE (NUMBER)	MAKER
TPR-67SD	IS4420DWSG-1	3963220410	4P	47W	Shaded Pole Induction	AL 4	SUNGSHIN

4-5. EVAPORATOR FAN MOTOR

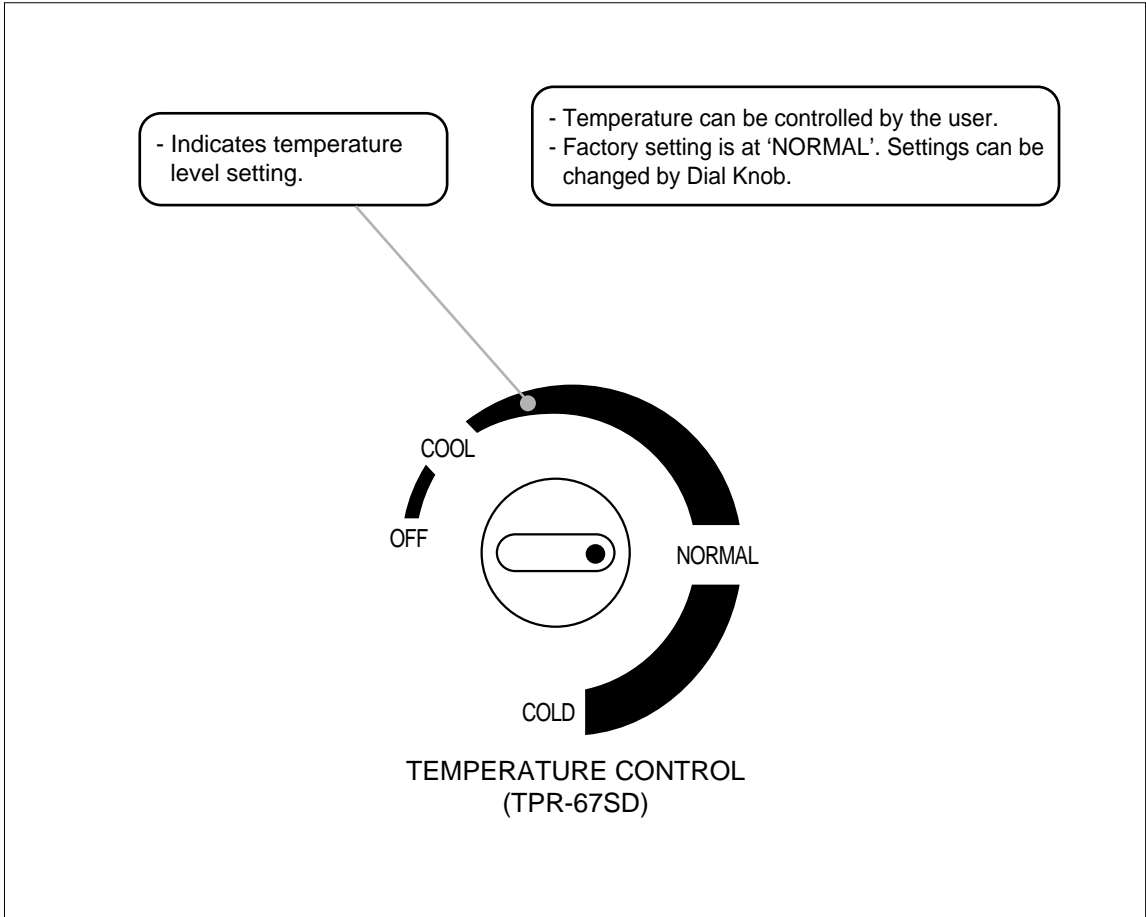
MODEL	PART NAME	PART NO.	POLE	INPUT	TYPE	BLADE (NUMBER)	MAKER
TPR-67SD	IS4420DWSN-2A	3963328120	4P	47W	Shaded Pole Induction	AL 5	SUNGSHIN

4-6. SWITCH

PART NAME	PART NO.	RATING	MAKER
POWER SWITCH (ROCKER SWITCH)	30281Q0100	125V/15A	SKT
THERMOSTAT	30283M0100	K55Q-5608, 16A	RANGCO

5. TEMPERATURE CONTROL INSTRUCTION

5-1. HOW TO USE THE TEMPERATURE CONTROL



5-2. FUNCTION TABLE

No	Function	Controlled Part	Description												
1	Temperature Control (K55Q-5608) Model: TPR-67SD	Compressor Cond. Fan Motor	1. The temperature can be changed by turning the dial knob. 2. Compressor is automatically turned on and off by thermostat. ■ Cut in and out temperature chart. °F <table border="1" style="width: 100%; border-collapse: collapse;"> <thead> <tr> <th style="text-align: center;">No.</th> <th style="text-align: center;">Cool</th> <th style="text-align: center;">Normal</th> <th style="text-align: center;">Cold</th> </tr> </thead> <tbody> <tr> <td style="text-align: center;">Cut in</td> <td></td> <td style="text-align: center;">40.1 ± 2.7</td> <td></td> </tr> <tr> <td style="text-align: center;">Cut Out</td> <td style="text-align: center;">21.2</td> <td style="text-align: center;">17.1</td> <td style="text-align: center;">10.4</td> </tr> </tbody> </table>	No.	Cool	Normal	Cold	Cut in		40.1 ± 2.7		Cut Out	21.2	17.1	10.4
No.	Cool	Normal	Cold												
Cut in		40.1 ± 2.7													
Cut Out	21.2	17.1	10.4												

6. PARTS-LIST OF PIZZA PREP TABLE

Part name	Code	Description	Model
			TPR-67SD
Caster			
CASTER	30265L0400	TP5040-21-HDP	2
CASTER BRAKE	30265L0300	TP5040-21-HDP-TLB	2
Door			
DOOR ASSEMBLY(LEFT)	30200P1710	STAINLESS STEEL +URT	1
DOOR ASSEMBLY(RIGHT)	30200P1700	STAINLESS STEEL +URT	1
DOOR GASKET	30223P0100	PVC-S	2
DOOR BUSHING	30207H1000	NA-66	4
DOOR HINGE TOP(LEFT)	30229P0400		1
DOOR HINGE TOP(RIGHT)	30229P0500		1
DOOR HINGE BOTTOM(LEFT)	30229M0300		1
DOOR HINGE BOTTOM(RIGHT)	30229M0400		1
DOOR HINGE SPRING	30251M0100	HSW-3	2
COMPRESSOR COMPARTMENT			
CONDENSER COIL	30200P2200	CU	1
SUCTION LINE (A)	30244P0300	CU	1
COMPRESSOR BASE	30203P0300	SBHG,T1.6	1
COMPRESSOR	3020014570	T6217Z (115V / 60Hz)	1
POWER CORD	30213A1012	KKP-30	1
FRONT GRILLE PANEL	30214P1600	STAINLESS STEEL	1
REAR GRILLE	30214P1700	HSWR,BLACK COATING	1
COMPRESSOR DRYER	30268L0300	XH-9,Ø3.1	1
DRAIN PAN	30211A0202	PP T2.0	1
DRAIN PAN HOUSING	30225P0100	SPG,T0.5	1
DRAIN HOSE	30232M0210	PVC-S	1
CONDENSER FAN MOTOR	3963220410	IS-4420DWSG-1	1
CONDENSER FAN BLADE	30218B0100	AL Ø225	1
CONNECTING PIPE	30244P0700	CONDENSER AND DRYER	1
CONNECTING PIPE (DELIVERY PIPE)	30244P1000	COMP.AND CONDENSER	1
CAPILLARY TUBE	30244P0400	ID Ø1.6*T0.6	1
SUCTION LINE (B)	30244P0500	OD Ø9.52*T0.8	1
COMPRESSOR HARNESS ASSEMBLY	30227P0400		1
REFRIGERATION COMPARTMENT			
MULLION COVER	30214P1400	STAINLESS STEEL	1
MULLION HEATER	30228M0303	115V / 15W,PVC	1
CABINET FRAME HEATER	30228P0100	115V / 60W,PVC	1

Part name	Code	Description	Model
			TPR-67SD
EVAPORATOR COIL	30270P0100	CU	1
EVAPORATOR DRAIN PAN	30211P0200	AL	1
EVAPORATOR FAN MOTOR	3963328120 I	S4420DWSN-2A	1
EVAPORATOR FAN BLADE	30218F0200	AL Ø175	1
EVAPORATOR FAN MOTOR GUARD	30214K0100	HIPS Ø175	1
EVAPORATOR FRONT DUCT PANEL	30269P0100	STAINLESS STEEL	1
AIR GUIDE PAD	30241P0600	E-PS	1
PAN DUCT	30269P0200	STAINLESS STEEL	1
PAN DUCT COVER	30269P0500	AL	1
AIR DUCT PANEL (LOUVERED PANEL)	30269P0300	STAINLESS STEEL	1
THERMOSTAT	30283M0100	K55-Q5608	1
POWER SWITCH (ROCKER SWITCH)	30281Q0100	125V / 15A,250V / 8A	1
SHELF STANDARD	30220M0300	STAINLESS STEEL	8
SHELF CLIP	30220L0900	PA6	20
SHELF	30278P0200	STAINLESS STEEL	4
PAN	30211P0100	PC T2.5	9
HOOD LID LEFT	30200P3600	LID +LINER +PAD +HINGE	1
HOOD LID RIGHT	30200P3500	LID +LINER +PAD +HINGE	1
HOOD LID BRACKET LEFT	30206P0600	STAINLESS STEEL T2.0	1
HOOD LID BRACKET CENTER	30206P0800	STAINLESS STEEL T2.0	1
HOOD LID BRACKET RIGHT	30206P0700	STAINLESS STEEL T2.0	1
HOOD LID HANDLE	30226P0100	ZNDC	2
CUTTING BOARD	30241P1000	LD-PE	1
CUTTING BOARD BRACKET	30206P1900	STAINLESS STEEL T1.6	2
CUTTING BOARD FITTING SCREW	7S105A0564	M5,MFNI	2

7. REPLACEMENT OF MAIN COMPONENTS

* Surely turn the unit off before replacing any part of it!

7-1. REPLACING THE DOOR

A. Unscrew the door hinge top.



B. Lift the door. Replace the old one with new. Insert the door hinge top into the door bush. Angle between the door line and the hinge bracket line is 90° as pictures below.



C. Rotate the door hinge top by 180° cw.

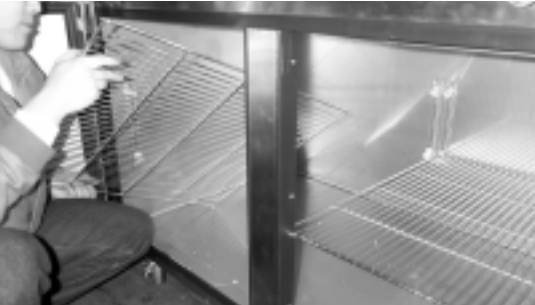


* In case of the left door, replace it symmetrically to pictures above.

REPLACEMENT OF MAIN COMPONENTS

7-2. REPLACING THE MULLION

A. Remove all shelves from inside of the unit and unscrew the screws on each side of the mullion.



B. Rip off the mullion cover carefully.



C. Disconnect the mullion heater and pull out the mullion insulator.



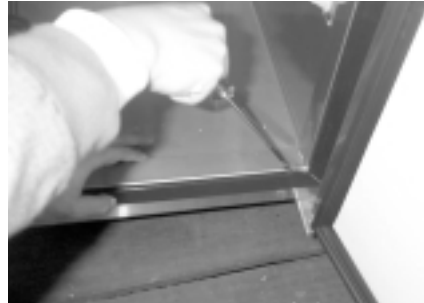
D. Unscrew the screws on top and bottom of the mullion. Replace the old one with new.



REPLACEMENT OF MAIN COMPONENTS

7-3. REPLACING THE CABINET FRAME HEATER

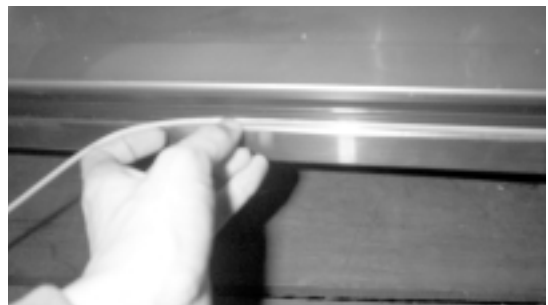
A. Insert '-' screw driver into the gap between the cabinet frame and the cabinet frame cover.



B. Separate the end of the cabinet frame cover and pull it out continuously to the end of the other side.



C. Disconnect the cabinet frame heater from the main harness. Replace the old one with new.



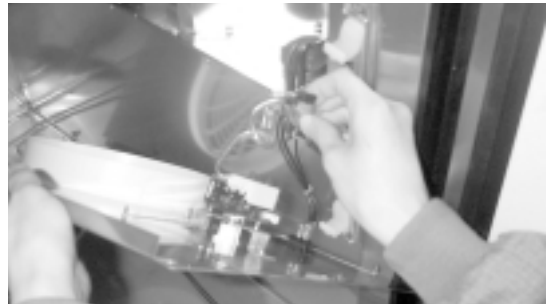
REPLACEMENT OF MAIN COMPONENTS

7-4. REPLACING THE EVAPORATOR FAN MOTOR

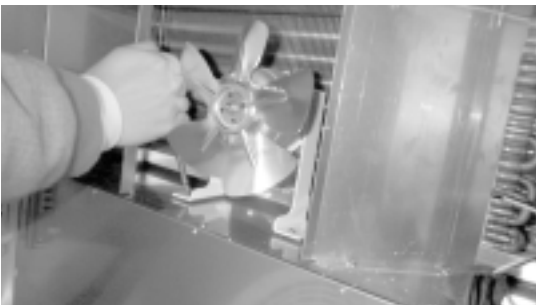
A. Unscrew the screws on the evaporator front duct panel.



B. Take it apart and disconnect the thermostat and the power switch from the main harness.



C. Unscrew the screws on the evaporator fan motor bracket using a short '+' screw driver.



D. Disconnect the evaporator fan motor from the main harness. Replace the old one with new.



REPLACEMENT OF MAIN COMPONENTS

7-5. EVAPORATOR LEAK CHECKING

A. Unscrew a hidden screw at the position as the picture below.



B. Lift up the front grille panel and pull it out. Cut the silicon off around the cabinet front cover using a knife and pull it out.



C. Check leaks of the welded lines of the evaporator coil as the picture below.



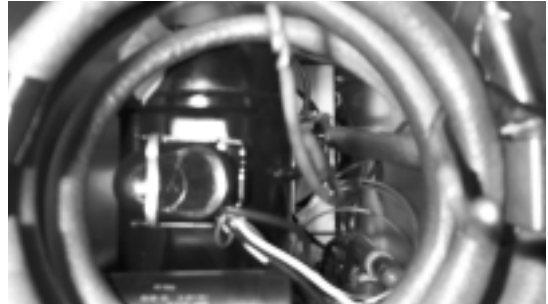
REPLACEMENT OF MAIN COMPONENTS

7-6. REPLACING THE COMPRESSOR COMPARTMENT PART

A. Unscrew the screws on the compressor base.

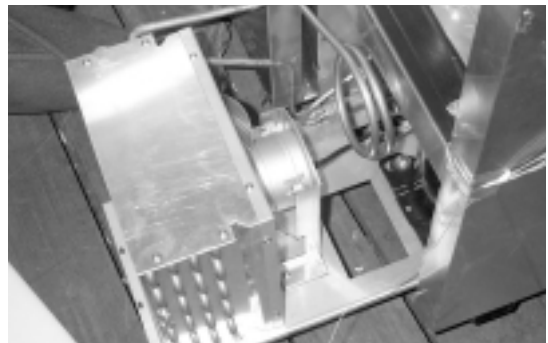


B. Disconnect the suction line connection by melting it using a torch.



C. Check the harness ties and the ground screws. Untie them and unscrew them for safety.

Pull the compressor base out carefully and repair the defective cycle parts.



REPLACEMENT OF MAIN COMPONENTS

7-7. REPLACING THE EVAPORATOR

A. Unscrew the screws on the brackets at the each rear corner of the unit as pictures below.

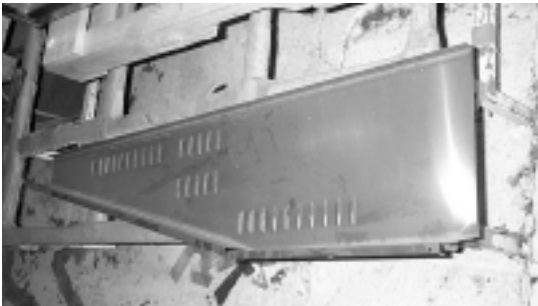


**B. Remove all the shelves from inside of the unit.
Unscrew the screw on the brackets at the front top position inside of the unit as pictures below.**



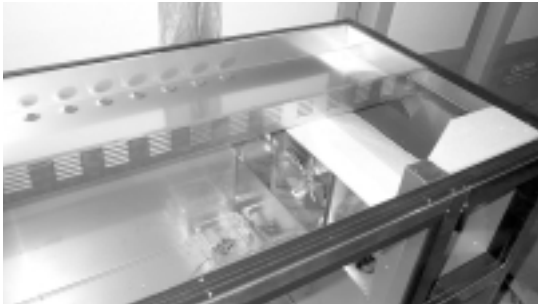
REPLACEMENT OF MAIN COMPONENTS

- C. Unscrew all the screws on the air duct panel and pull it out carefully.
Unscrew all the screws on the pan duct.
You can see the black lines around the corner inside top of the unit.
Cut the black silicon bonding lines of the counter top.
And then, take apart the counter top as the picture below.



REPLACEMENT OF MAIN COMPONENTS

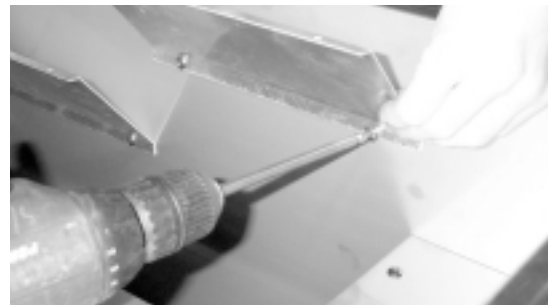
D. Lift up the pan duct and put it out as the picture below.



**E. There is a insulator that guides cold air flow into the air duct panel. Pull it out.
You can see the duct panel which shape is 'E'.**



F. Unscrew the screws on the air guide panel (B) and (C).

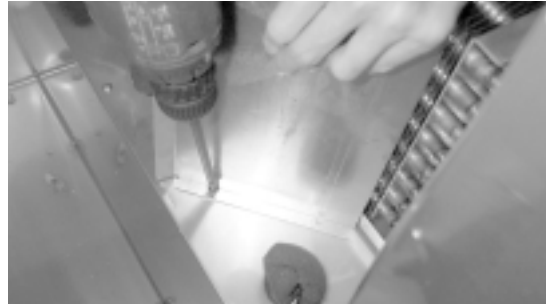
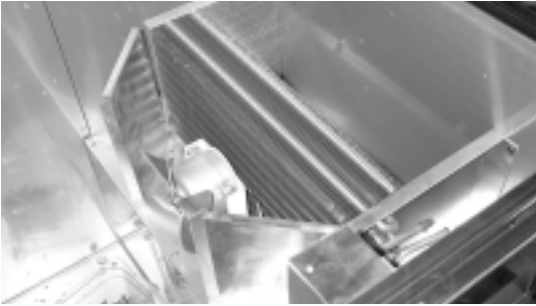


G. Unscrew the screws on the duct panel and pull it out as the picture below.

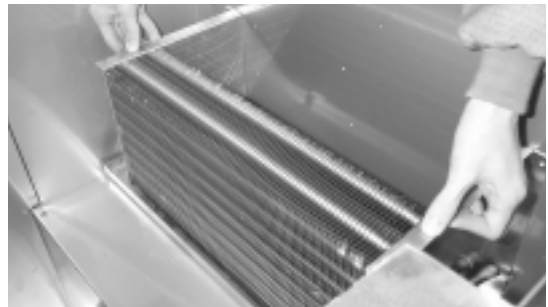


REPLACEMENT OF MAIN COMPONENTS

H. Unscrew the screws on the duct panels in front of the evaporator.



I. Unscrew the screws on the evaporator fan motor bracket and take it apart from the unit. Disassemble the connecting pipe between the evaporator coil and the suction line by melting connections using a torch. Unscrew the screws on the evaporator brackets and take it apart from the unit. Reassemble the new evaporator.



ABOUT THIS MANUAL

VISION CREATIVE, INC.

571 526

16

		TEL	
MODEL	TPR - 67SD(S/M)()		
BUYER			
	1	2003.1.16	6
	2	2003.2.13	7
	3	2003.2.14	8
	4	2003.2.18	9
	5		10
	03.2.18 - (Han) -		
MEMO			

VISION

TEL: 757 - 9340 FAX: 774 - 1039